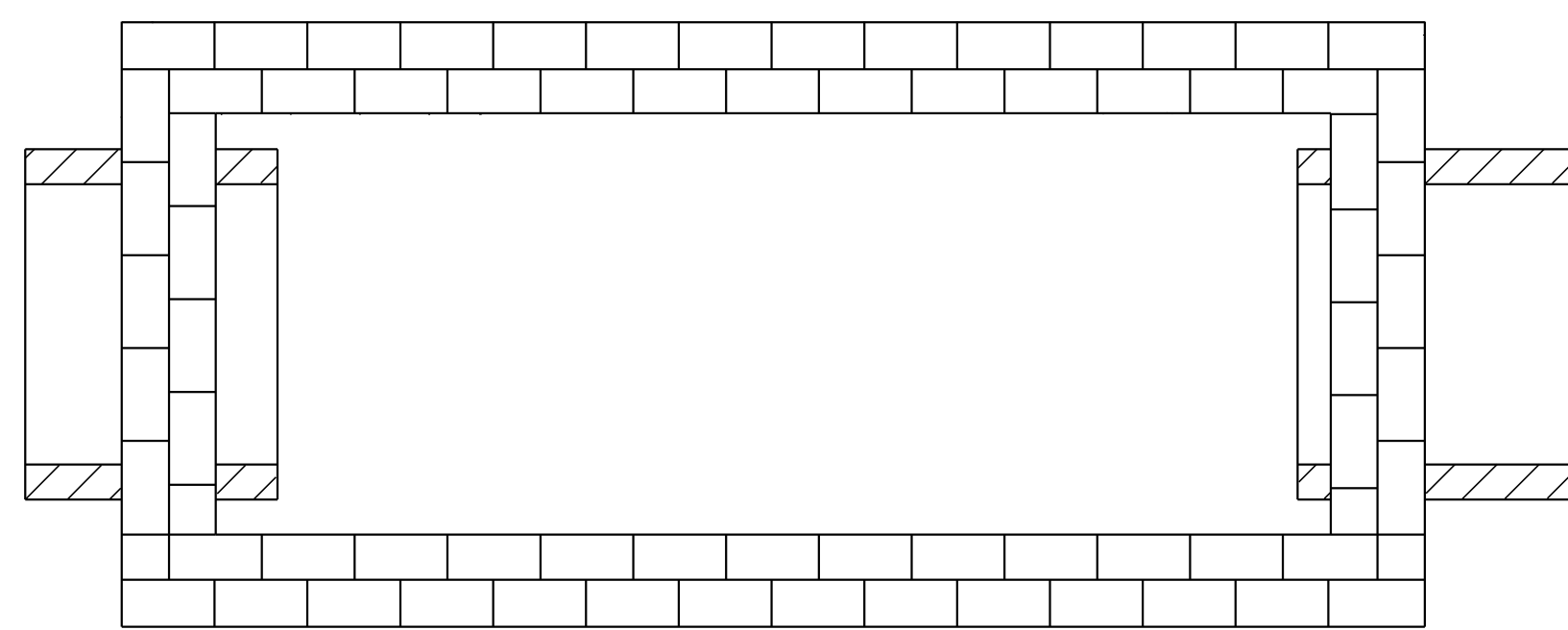
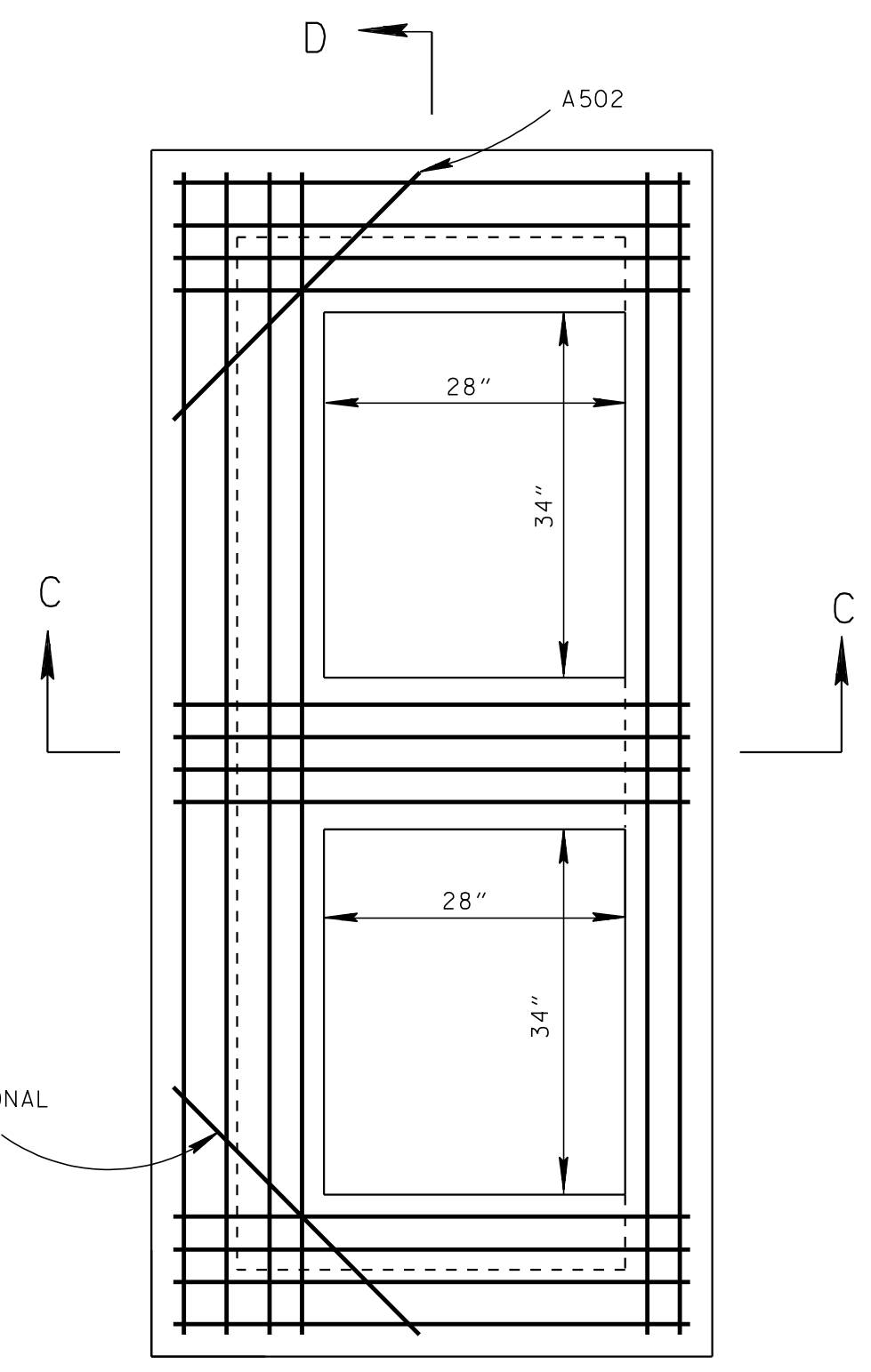


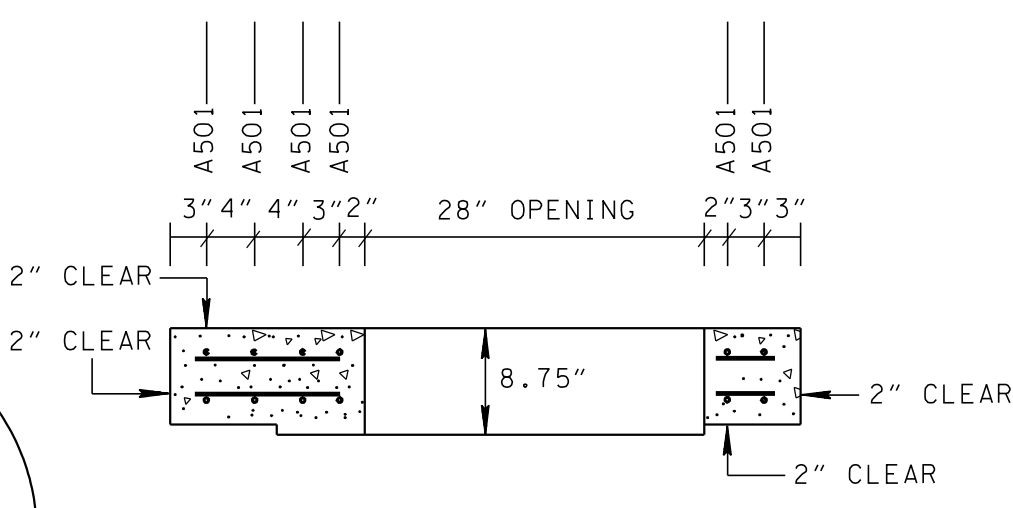
PLAN VIEW



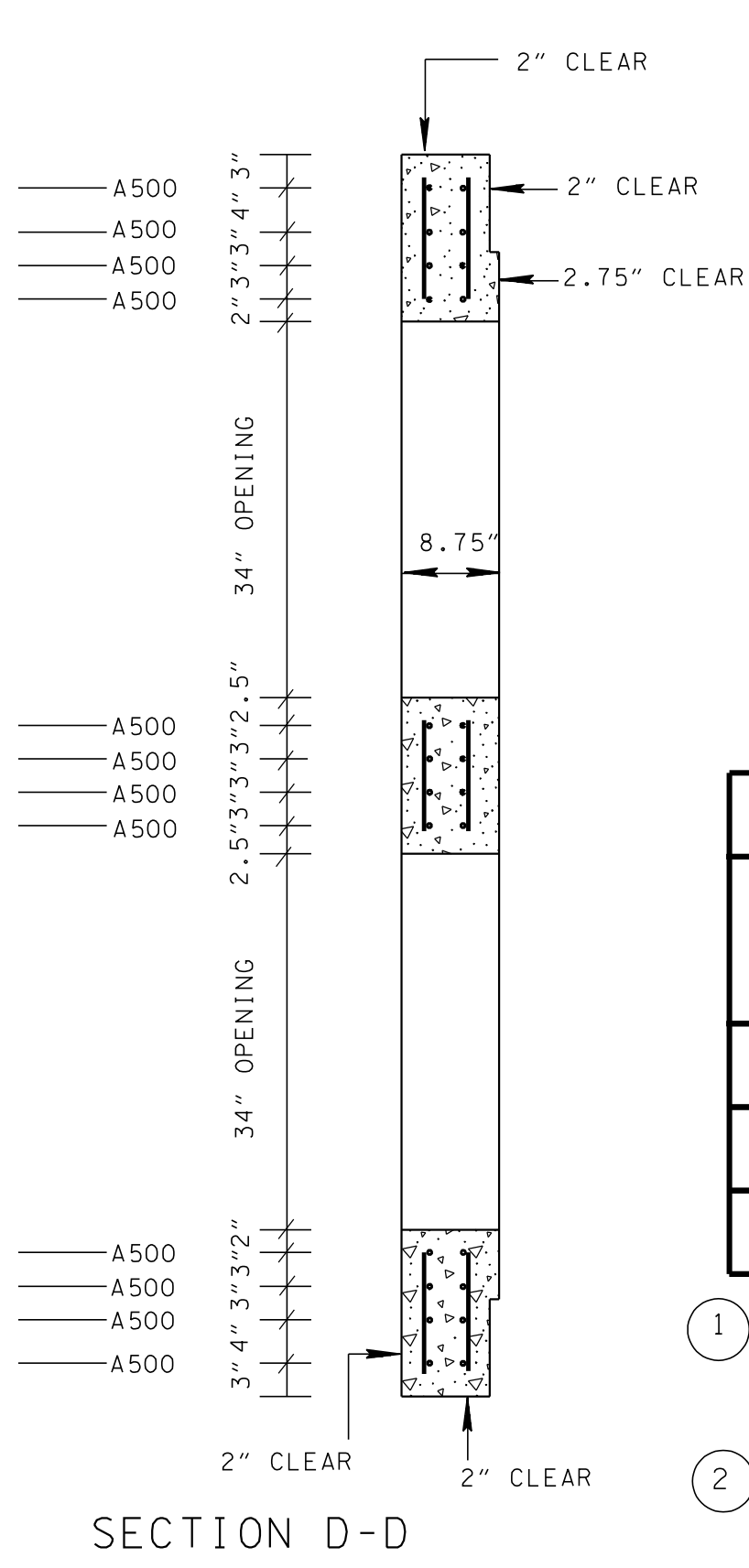
SECTION E-E



PLAN VIEW



SECTION C-C



SECTION D-D

REINFORCING STEEL LEGEND	
48"	A500
108"	A501
34"	A502

CATCH BASIN MINIMUM DEPTH TABLE			
INSIDE DIAMETER (X) OF PIPE (INCHES)	MINIMUM DEPTH - (FEET)		
	CONCRETE PIPE	CORRUGATED METAL PIPE	POLYETHYLENE PIPE
18	4.42	4.21	4.33
24	4.92	4.71	4.88
30	5.50	5.21	5.46

- ① DEPTH MEASUREMENT MADE FROM TOP OF GRATE TO OUTLET FLOW ELEVATION BASED ON INLET AND OUTLET PIPES BEING THE SAME DIAMETER. IF OUTLET PIPE IS GREATER ADJUSTMENT IN DEPTHS MUST BE MADE TO ACCOMMODATE THIS SITUATION.
- ② TO DETERMINE FLOOR OF CATCH BASIN ELEVATION, WHEN INLET AND OUTLET PIPES ARE THE SAME SIZE, ADD PIPE WALL THICKNESS PLUS 1.5" TO THE ABOVE MINIMUM DEPTHS.

INSIDE DIAMETER (X) OF PIPE (INCHES)	DIAMETER OF CUT-OUT HOLES F & G - (INCHES)		
	CONCRETE PIPE	CORRUGATED METAL PIPE	POLYETHYLENE PIPE
18	26	21	24
24	32	27	31
① 30	40	33	39

- ① TO BE USED IN FRONT AND BACK WALLS ONLY.

GENERAL NOTES

- (A) DRAWING TO BE USED FOR NO. 14 BRICK CATCH BASINS THAT ARE SIX FEET AND LESS IN DEPTH. SEE STANDARD DRAWINGS D-CB-14P AND D-CB-14S FOR DETAILS OF NO. 14 CONCRETE CATCH BASINS THAT ARE MORE THAN SIX FEET IN DEPTH.
- (B) CAST-IN-PLACE CONCRETE USED IN BRICK CATCH BASINS SHALL BE CONSTRUCTED IN ACCORDANCE WITH STANDARD SPECIFICATIONS, SECTION 611 AND/OR SPECIAL PROVISIONS.
- (C) THE CONTRACTOR MAY WITH PERMISSION FROM THE ENGINEER SUBSTITUTE PRECAST CATCH BASINS FOR CAST-IN-PLACE CATCH BASINS PROVIDED THAT ALL PRECAST ELEMENTS MEET ASTM M913 (CURRENT EDITION) UNLESS SUPERSEDED BY THIS DRAWING.
- CONCRETE:  $F_c = 4,000$  POUNDS PER SQUARE INCH AT 28 DAYS  
REINFORCING STEEL: ASTM A615,  $F_y = 60,000$  POUNDS PER SQUARE INCH  
ALL REINFORCING IS TO BE INSTALLED AS DETAILED ON THIS DRAWING.
- (D) PRECAST CATCH BASIN UNITS USED FOR LIDS AND FLOORS WHICH ARE DAMAGED DURING SHIPMENT OR INSTALLATION WILL BE REJECTED. IT SHALL BE THE RESPONSIBILITY OF THE CONTRACTOR TO REPLACE DAMAGED CATCH BASIN UNITS AT HIS OWN EXPENSE.
- (E) APPROPRIATE SIZING AND LOCATION OF LIFTING DEVICES SHALL BE THE RESPONSIBILITY OF THE FABRICATOR TO ASSURE BALANCED HANDLING DURING INSTALLATION OF THE CATCH BASIN.
- (F) THE CONTRACTOR IS TO PATCH ALL LIFTING DEVICE HOLES AND PLACE A MINIMUM OF ONE(1) INCH OF COVER OVER THE HARDWARE OF THESE DEVICES ON BOTH TOP AND BOTTOM SURFACES.
- (G) INVERT ELEVATIONS ARE TO BE ADJUSTED AS DIRECTED BY THE ENGINEER IN ORDER TO ACCOMMODATE INLET AND OUTLET PIPES.
- (H) SEE STANDARD DRAWING D-CBB-12A FOR DETAILS REGARDING CAST IRON GRATES, FRAMES AND CURB INLETS.
- (I) PAYMENT FOR CATCH BASIN WILL BE MADE UNDER ITEM NUMBER 611-14.02 CATCH BASINS, TYPE 14, > 4'-8' DEPTH PER EACH.

- REV. 1-19-96: MODIFIED DRAWING NO. D-CB-14S BY CHANGING MATERIAL IN SIDE WALLS FROM CONCRETE TO BRICK.
- REV. 12-18-96: REMOVED 0.5" PREMOLDED FIBER EXPANSION JOINT FROM SECTION "B-B". REMOVED OLD GENERAL NOTE ③. CHANGED LABEL OF LAST THREE GENERAL NOTES.
- REV. 4-15-97: CHANGED LABEL OF BASE SECTION.
- REV 10-26-97: CHANGED MINIMUM DEPTH TABLE.
- REV. 1-19-99: MODIFIED CATCH BASIN MINIMUM DEPTH TABLE.
- REV. 5-27-01: CHANGED PAY ITEM IN GENERAL NOTE ①.
- REV. 7-29-02: CHANGED ASTM SPECIFICATION IN GENERAL NOTE ③.

MINOR REVISION -- FHWA APPROVAL NOT REQUIRED.

STATE OF TENNESSEE  
DEPARTMENT OF TRANSPORTATION

STANDARD  
RECTANGULAR  
BRICK NO. 14  
CATCH BASIN  
1-19-96 D-CB-14B